



Instructions

VALVEMATE II Holder

Part Number 21044038

This accessory is for use with the VERITY® 3240 High Pressure Binary Gradient Pump or any other VERITY instrument with similar accessories rails on the sides. It can be ordered with the pump or added afterwards in the field.

The holder supports a VALVEMATE® II Valve Actuator which can be equipped with any compatible low or high-pressure valve. This accessory is ideal for column switching or backflush (high-pressure valve is required in that case).

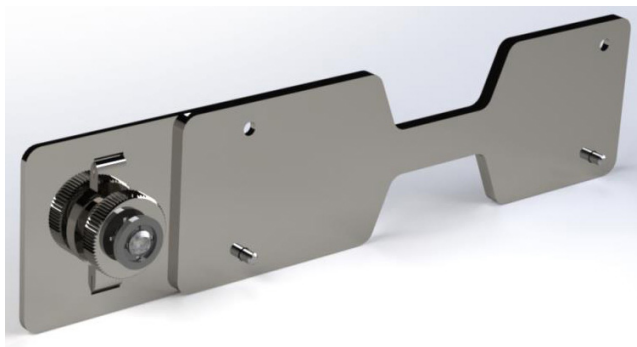


Figure 1
VALVEMATE II Holder

The VALVEMATE can be installed to either side of the VERITY 3240 Pump. A locking device is provided to attach the holder in the integrated accessories rail of the pump. A rail can accommodate two VALVEMATES, one above the other.



Figure 2
VALVEMATE® II Valve Actuator on
VERITY® 3240 High Pressure Binary Gradient Pump

Installation

1. Choose the side of the pump to install the VALVEMATE.
 - a. To the right side:
Remove the two screws on the left side of the VALVEMATE with a Torx T-10 screwdriver.
 - b. To the left side:
Remove the two screws on the right side of the VALVEMATE with a Torx T-10 screwdriver.

Keep those screws in case of future need.

2. Attach the holder to the side of the VALVEMATE using the two M3 screws supplied and a 2 mm Allen wrench. The two pads stuck on the holder should be visible.



Figure 3
VALVEMATE II Holder with VALVEMATE® II Valve Actuator
(installation to the right side of the pump)

3. Ensure the knurled nut of the locking device is loosened (spring released) and the T-head bolt is positioned vertically (aligned with the bracket tabs).
4. Fit the locking device into the VALVEMATE II holder and then into the rail to the side of the pump.
5. Hold the assembly and adjust the position in height.
6. Press slightly on the knurled nut to compress the spring of the locking device and tighten the nut to turn the T-head bolt 1/4 turn until it is in a horizontal position. The bolt end notch allows for checking the correct positioning.
7. Firmly finger-tighten the knurled nut of the locking device to secure the VALVEMATE II holder with the VALVEMATE to the pump.

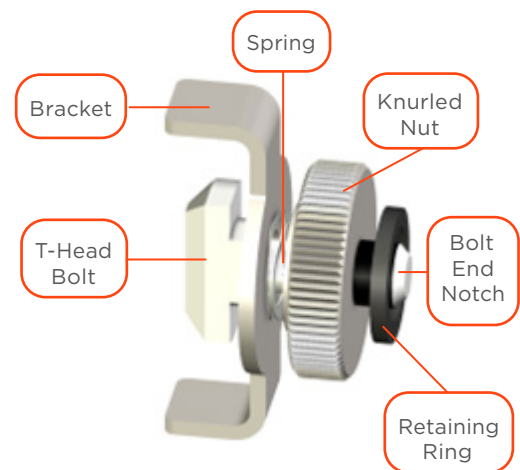


Figure 4
Locking Device