



UPDATE Installation Instructions

TRILUTION® LH Software v4.x

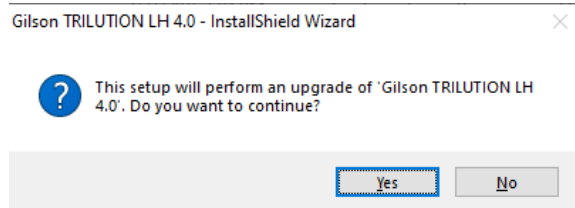
This document describes the installation procedures when updating TRILUTION® LH Software v4. Additional documentation is supplied on the Gilson Software USB.

NOTE

If at any time during the update installation a User Account Control window appears, then click **Yes**.

The update installation proceeds as follows:

1. Insert the Gilson Software USB into the USB port and then follow the instructions in **Start Here.pdf** to navigate to the installation file and start the installation.
2. When asked if you want to perform an upgrade as shown in the screen below, select **Yes**.



3. Follow the on-screen instructions to install any required pre-requisite items, if not already installed. The InstallShield Wizard will either prompt for action or complete the installation of the required items automatically.

NOTICE

While the installation is running, do not close any windows or boxes that appear. Take no action until you are prompted to.

NOTE

A reboot may be required after the installation of some required items. Follow the instructions in step 1 to navigate back to the installation file, if necessary.

Installation Qualification

Complete the TRILUTION LH Installation Qualification supplied on the Gilson Software USB.



UPDATE Installation Instructions

TRILUTION® LH Software v4.x

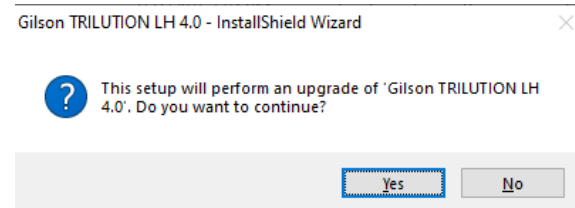
This document describes the installation procedures when updating TRILUTION® LH Software v4. Additional documentation is supplied on the Gilson Software USB.

NOTE

If at any time during the update installation a User Account Control window appears, then click **Yes**.

The update installation proceeds as follows:

1. Insert the Gilson Software USB into the USB port and then follow the instructions in **Start Here.pdf** to navigate to the installation file and start the installation.
2. When asked if you want to perform an upgrade as shown in the screen below, select **Yes**.



3. Follow the on-screen instructions to install any required pre-requisite items, if not already installed. The InstallShield Wizard will either prompt for action or complete the installation of the required items automatically.

NOTICE

While the installation is running, do not close any windows or boxes that appear. Take no action until you are prompted to.

NOTE

A reboot may be required after the installation of some required items. Follow the instructions in step 1 to navigate back to the installation file, if necessary.

Installation Qualification

Complete the TRILUTION LH Installation Qualification supplied on the Gilson Software USB.